



## Grants Close

**£2,200 Per Month**

Cosway Estates are pleased to offer for rent this lovely spacious two double bedroom bungalow, situated by the popular Lidbury Square development. This property comprises of a through reception/dining room with door leading out to the garden; separate fitted kitchen and bathroom. The property comes with driveway for 2-3 cars. Located within a short distance to Mill Hill East Underground Station. AVAILABLE FEBRUARY 2026. Viewings highly advised.

### Viewing

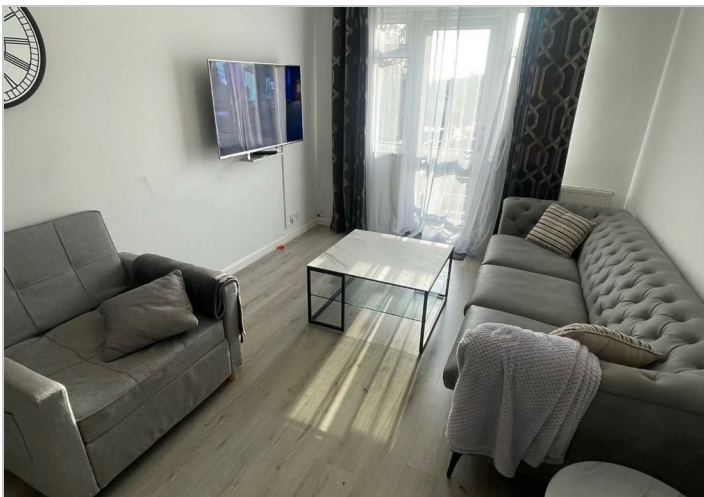
Please contact our Mill Hill Office on 02089590011 if you wish to arrange a viewing appointment for this property or require further information.





A map showing the location of the property. The property is marked with a green pin on Devonshire Rd. Other nearby streets include Engel Park, Birtacry Rise, and Ashley Walk. The map is credited to Google and shows map data from 2026.

Energy Efficiency Rating		Environmental Impact (CO <sub>2</sub> ) Rating				
	Current	Potential		Current	Potential	
Very energy efficient - lower running costs				Very environmentally friendly - lower CO <sub>2</sub> emissions		
(A+)				(A+)		
(A)				(A)		
(B)				(B)		
(C)				(C)		
(D)				(D)		
(E)				(E)		
(F)				(F)		
(G)				(G)		
Not energy efficient - higher running costs				Not environmentally friendly - higher CO <sub>2</sub> emissions		



135-137 The Broadway, Mill Hill, NW7 4TD  
02089590011 [management@cosway.co.uk](mailto:management@cosway.co.uk) [www.cosway.co.uk](http://www.cosway.co.uk)